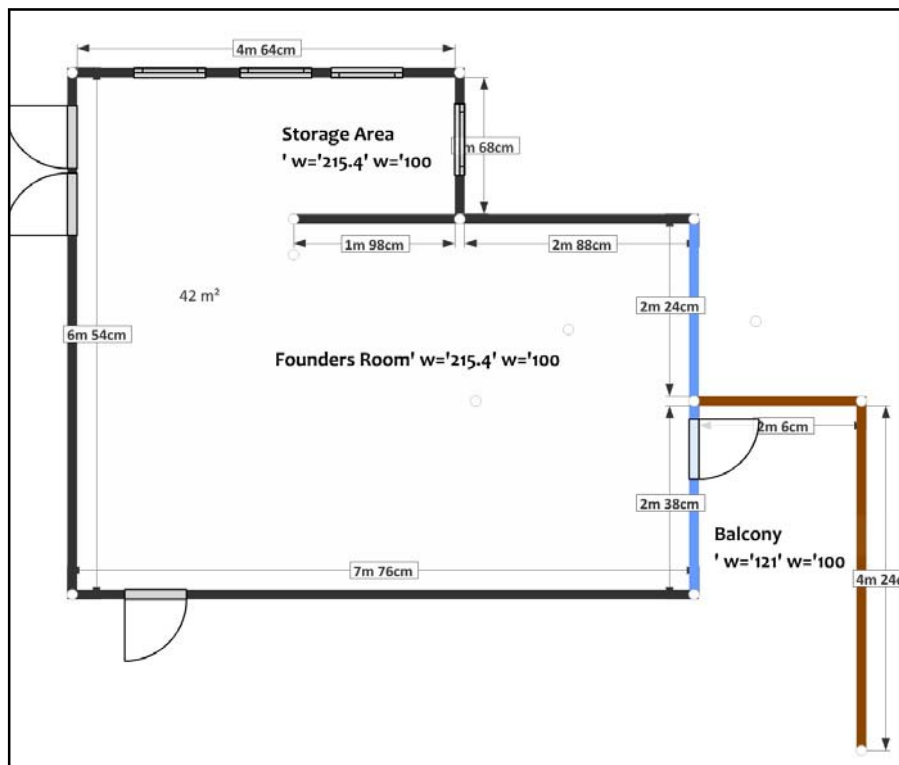


# Founders Room



## Founders Room Measurements

	Metric	Imperial
Length	7.750m	25.38ft
Width	6.300m	20.63ft
Height	3.67m	12.00ft
Area	48.82m²	523.59ft²

## About the Founders Room

The Founders Room is located on the first floor of the Dorey Centre. The room is glass fronted with views over the neighbouring Bailiwick islands. There is a balcony area that is shared with the café.

Access is via a corridor / lobby to the West of the room with an emergency exit into the café

Founders Room Continued.....

## Founders Room Technical

The room is equipped with data communication cabling with 28 connection points and patch-bay facilities. There are 10 double, 13 amp socket outlets divided over one circuit providing a loading capacity of up to 3kw.

The comprehensive lighting installation consists of a mixture of ceiling tile luminaries and low voltage down lighters divided over a number of circuits allowing variation in lighting levels. Automatic emergency lighting is fitted and emergency exits are always illuminated.

The environment is heated by radiators with individual thermostatic valves: temperate/chilled air supply and extract ventilation is installed.

## Founders Room Rates of Hire 2015

Half Day (morning or afternoon).....£136\*

Day (morning & afternoon).....£170

Evening.....£170

Full Day (morning, afternoon & evening).....£245

*\*If a booking spans both sessions (e.g. lunchtime function) the charge will be £148*

