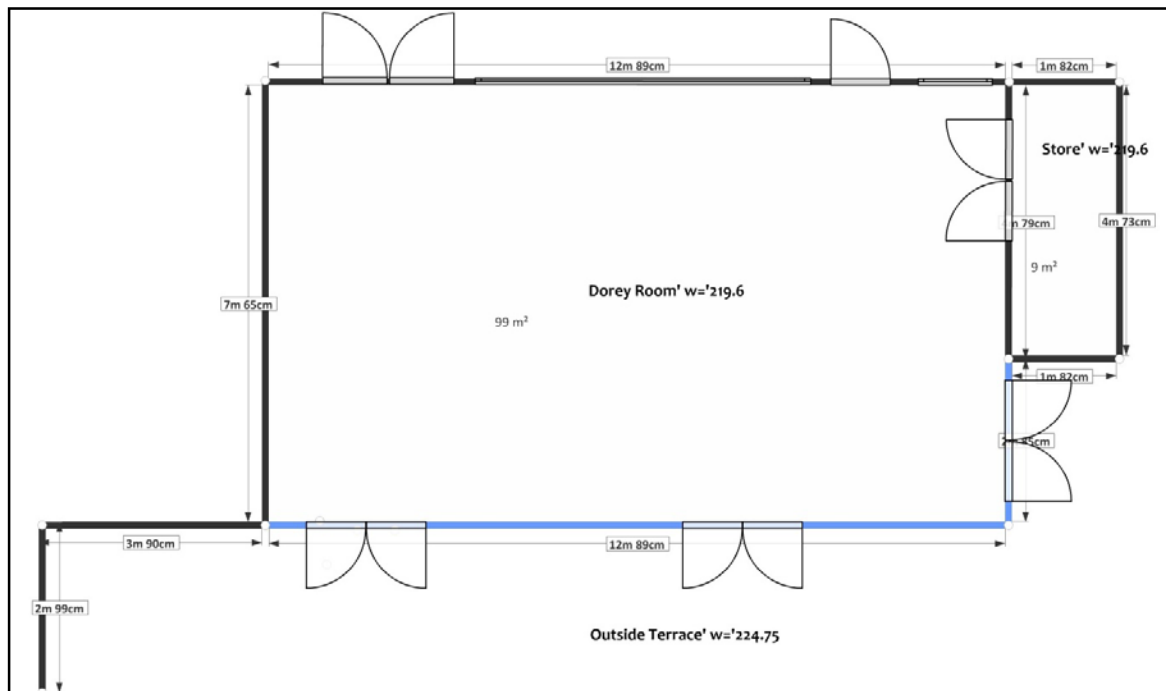




# Dorey Room



## Dorey Room Measurements

	Metric	Imperial
Length	12.900m	43.00ft
Width	7.650m	25.50ft
Height	2.625m	12.00ft
Area	98.685m <sup>2</sup>	1096.50ft <sup>2</sup>

## About the Dorey Room

The Dorey Room is located on the ground floor. The room is glass fronted with views over the neighbouring Bailiwick islands. There is an outside terrace that runs the length of the room and accessed through double doors. The terrace is two metres wide and has a safety rail; this forms an escape route in the event of emergency evacuation.

The room has a bar and a servery area run by Jimmy's Café. It doubles as the bar for concerts within the Whittaker Hall and as a multi-purpose function room.

Dorey Room Continued.....

Dorey Room Continued.....

## Dorey Room Technical

The room is equipped with data communication cabling with 28 connection points and patch-bay facilities. There are nine double, 13 amp socket outlets divided over two circuits providing a loading capability of up to 6kW. The comprehensive lighting installation consists of a mixture of ceiling tile luminaires and low voltage down lighters divided over a number of circuits allowing variation in lighting levels. Automatic emergency lighting is fitted and emergency exits are always illuminated.

The environment is heated by radiators with individual thermostatic valves; temperature / chilled air supply and extract ventilation is installed.

## Dorey Room Rates of Hire 2018

Half Day (morning or afternoon).....	<b>£150*</b>
Day (morning & afternoon).....	<b>£195</b>
Evening.....	<b>£185</b>
Full Day (morning, afternoon & evening).....	<b>£250</b>

*\*If a booking spans both sessions (e.g. lunchtime function) the charge will be £180*

